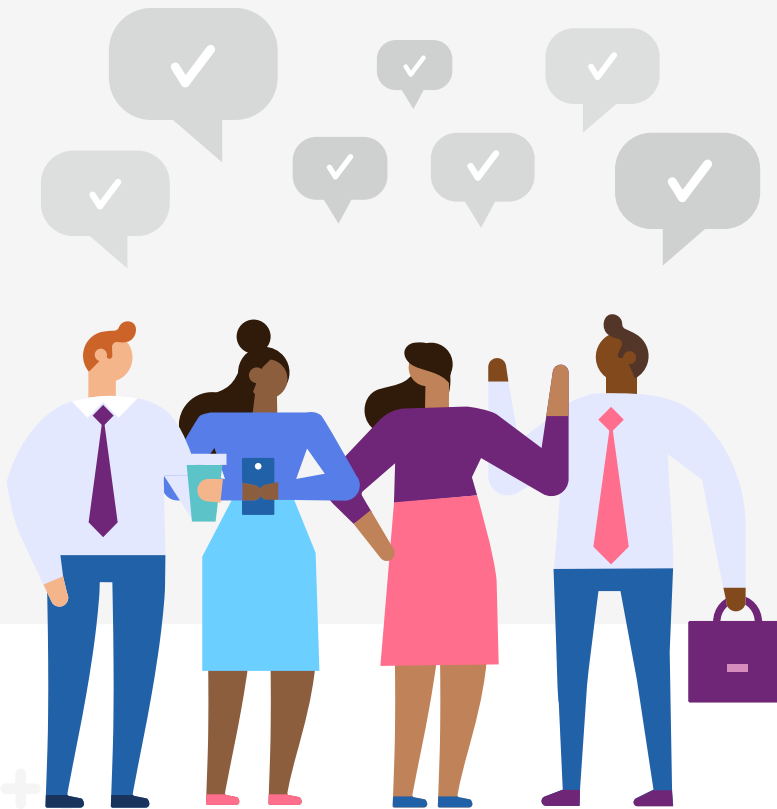




FSA | HSA | HRA

ELIGIBLE EXPENSES



(FLEXIBLE SPENDING ACCOUNT)

FSA ELIGIBLE EXPENSES



ELIGIBLE EXPENSE EXAMPLES

There are thousands of eligible expenses for tax-free purchase with your account funds, including prescriptions, doctor's office copays, health insurance deductibles, and coinsurance. Many over-the-counter (OTC) treatments are also eligible.

- ✓ Acupuncture
- ✓ Alcoholism treatment
- ✓ Ambulance
- ✓ Artificial limb
- ✓ Birth control pills
- ✓ Blood pressure monitoring device
- ✓ Breast pumps and related supplies
- ✓ Chiropractic care
- ✓ Contact lenses and related materials
- ✓ Dental treatment
- ✓ Dentures
- ✓ Diagnostic services
- ✓ Drug addiction treatment
- ✓ Eye examination, eye glasses, and reading glasses
- ✓ Family planning items
- ✓ Fertility treatment
- ✓ Flu shot
- ✓ Hearing aids
- ✓ Hospital services
- ✓ Immunization
- ✓ Insulin and diabetic supplies
- ✓ Laboratory fees
- ✓ Laser eye surgery
- ✓ Medical testing devices
- ✓ Menstrual care products
- ✓ Nursing services
- ✓ Obstetrical expenses
- ✓ Orthodontia (not for cosmetic reasons)
- ✓ Over-the-counter (OTC) treatments containing medicine—cold treatments, ointments, pain relievers, stomach remedies, etc.
- ✓ Over-the-counter (OTC) treatments without medicine—bandages, wraps, medical testing devices, etc.
- ✓ Oxygen
- ✓ Physical exam
- ✓ Physical therapy
- ✓ Prescription drugs
- ✓ Psychiatric care
- ✓ Smoking cessation program and medications
- ✓ Surgery
- ✓ Sunscreen & sun block (SPF 15+, broad spectrum)
- ✓ Transportation for medical care
- ✓ Weight loss program necessary to treat a specific medical condition
- ✓ Wheelchair, walkers, crutches, and canes

INELIGIBLE EXPENSE EXAMPLES

These items are not generally eligible for tax-free purchase with your account funds.

- ✗ Concierge service fees (billed for future services; no treatment provided)
- ✗ Cosmetics and cosmetic surgery
- ✗ Deodorant
- ✗ Exercise equipment
- ✗ Fitness programs
- ✗ Funeral expenses
- ✗ Hair transplants
- ✗ Household help
- ✗ Illegal operations and treatments
- ✗ Maternity clothes
- ✗ Teeth whitening

DUAL PURPOSE ITEMS

Items that can be used for a medical purpose or for general health and well-being are considered "dual purpose" and are eligible only with a prescription, doctor's directive or letter of medical necessity. Examples include:

- ✓ Dietary and weight loss supplements
- ✓ Fiber supplements
- ✓ Orthopedic shoes and inserts
- ✓ Snoring cessation aids
- ✓ Vitamins and herbal supplements



For more information visit connectyourcare.com

This material is for informational purposes only and is not an offer of coverage. ConnectYourCare does not provide tax or legal advice. This information is not intended and should not be taken as tax or legal advice. Any tax or legal information in this notice is merely a summary of ConnectYourCare's understanding and interpretation of some of the current tax regulations and is not exhaustive, nor is it a representation of actual savings to be had by your plan specifically. You should consult your tax advisor or legal counsel for advice and information concerning your particular situation before making any decisions.

© 2020 ConnectYourCare, LLC. All Rights Reserved.

(HEALTH SAVINGS ACCOUNT)



HSA ELIGIBLE EXPENSES

ELIGIBLE EXPENSE EXAMPLES

There are thousands of eligible expenses for tax-free purchase with your account funds, including prescriptions, doctor's office copays, health insurance deductibles, and coinsurance. Many over-the-counter (OTC) treatments are also available.

- ✓ Acupuncture
- ✓ Alcoholism treatment
- ✓ Ambulance
- ✓ Artificial limb
- ✓ Birth control pills
- ✓ Blood pressure monitoring device
- ✓ Breast pumps and related supplies
- ✓ Chiropractic care
- ✓ COBRA premiums (post tax only)
- ✓ Contact lenses and related materials
- ✓ Dental treatment
- ✓ Dentures
- ✓ Diagnostic services
- ✓ Drug addiction treatment
- ✓ Eye examination, eye glasses and reading glasses
- ✓ Family planning items
- ✓ Fertility treatment
- ✓ Flu shot
- ✓ Hearing aids
- ✓ Hospital services
- ✓ Immunization
- ✓ Insulin and diabetic supplies
- ✓ Laboratory fees
- ✓ Laser eye surgery
- ✓ Long-term care premiums or expenses (post tax)*
- ✓ Medical testing devices
- ✓ Menstrual care products
- ✓ Nursing services
- ✓ Obstetrical expenses
- ✓ Orthodontia (not for cosmetic reasons)
- ✓ Over-the-counter (OTC) treatments containing medicine—cold treatments, ointments, pain relievers, stomach remedies, etc.
- ✓ Over-the-counter (OTC) treatments without medicine—bandages, wraps, medical testing devices, etc.
- ✓ Oxygen
- ✓ Physical exam
- ✓ Physical therapy
- ✓ Prescription drugs
- ✓ Psychiatric care
- ✓ Retiree (post-65) medical insurance premiums (post tax)
- ✓ Smoking cessation program and medications
- ✓ Surgery
- ✓ Sunscreen & sun block (SPF 15+, broad spectrum)
- ✓ Telehealth services (pre-deductible)**
- ✓ Transportation for medical care
- ✓ Weight loss program to necessary to treat a specific medical condition
- ✓ Wheelchair, walkers, crutches and canes

*Limitations apply. See IRS Publication 502 for more information.

**Temporary provision based on the CARES Act

INELIGIBLE EXPENSE EXAMPLES

These items are not generally eligible for tax-free purchase with your account funds.

- ✗ Concierge service fees (billed for future services; no treatment provided)
- ✗ Exercise equipment
- ✗ Household help
- ✗ Cosmetics and cosmetic surgery
- ✗ Fitness programs
- ✗ Illegal operations and treatments
- ✗ Deodorant
- ✗ Funeral expenses
- ✗ Maternity clothes
- ✗ Hair transplants
- ✗ Teeth whitening

DUAL PURPOSE ITEMS

Items that can be used for a medical purpose or for general health and well-being are considered "dual purpose" and are eligible only with a prescription, doctor's directive or letter of medical necessity. Examples include:

- ✓ Dietary and weight loss supplements
- ✓ Snoring cessation aids
- ✓ Fiber supplements
- ✓ Vitamins and herbal supplements
- ✓ Orthopedic shoes and inserts



For more information visit connectyourcare.com

This material is for informational purposes only and is not an offer of coverage. ConnectYourCare does not provide tax or legal advice. This information is not intended and should not be taken as tax or legal advice. Any tax or legal information in this notice is merely a summary of ConnectYourCare's understanding and interpretation of some of the current tax regulations and is not exhaustive, nor is it a representation of actual savings to be had by your plan specifically. You should consult your tax advisor or legal counsel for advice and information concerning your particular situation before making any decisions.

© 2020 ConnectYourCare, LLC. All Rights Reserved.

(HEALTH REIMBURSEMENT ARRANGEMENT)

HRA ELIGIBLE EXPENSES



ELIGIBLE EXPENSE EXAMPLES

There are thousands of eligible expenses for tax-free purchase with your account funds, including prescriptions, doctor's office copays, health insurance deductibles, and coinsurance. Many over-the-counter (OTC) treatments are also eligible.

- ✓ Acupuncture
- ✓ Alcoholism treatment
- ✓ Ambulance
- ✓ Artificial limb
- ✓ Birth control pills
- ✓ Blood pressure monitoring device
- ✓ Breast pumps and related supplies
- ✓ Chiropractic care
- ✓ COBRA premiums (post tax only)
- ✓ Contact lenses and related materials
- ✓ Dental treatment
- ✓ Dentures
- ✓ Diagnostic services
- ✓ Drug addiction treatment
- ✓ Eye examination, eye glasses, and reading glasses
- ✓ Family planning items
- ✓ Fertility treatment
- ✓ Flu shot
- ✓ Hearing aids
- ✓ Hospital services
- ✓ Immunization
- ✓ Insulin and diabetic supplies
- ✓ Insurance premiums (post tax)
- ✓ Laboratory fees
- ✓ Laser eye surgery
- ✓ Long-term care premiums or expenses (post tax)*
- ✓ Medical testing devices
- ✓ Menstrual care products
- ✓ Nursing services
- ✓ Obstetrical expenses
- ✓ Orthodontia (not for cosmetic reasons)
- ✓ Over-the-counter (OTC) treatments containing medicine—cold treatments, ointments, pain relievers, stomach remedies, etc.
- ✓ Over-the-counter (OTC) treatments without medicine—bandages, wraps, medical testing devices, etc.
- ✓ Oxygen
- ✓ Physical exam
- ✓ Physical therapy
- ✓ Prescription drugs
- ✓ Psychiatric care
- ✓ Retiree (post 65) medical insurance premiums (post tax)
- ✓ Smoking cessation program and medications
- ✓ Surgery
- ✓ Sunscreen & sun block (SPF 15+, broad spectrum)
- ✓ Transportation for medical care
- ✓ Weight loss program necessary to treat a specific medical condition
- ✓ Wheelchair, walkers, crutches, and canes

*Limitations apply. See IRS Publication 502 for more information.

INELIGIBLE EXPENSE EXAMPLES

These items are not generally eligible for tax-free purchase with your account funds.

- ✗ Concierge service fees (billed for future services; no treatment provided)
- ✗ Exercise equipment
- ✗ Household help
- ✗ Cosmetics and cosmetic surgery
- ✗ Fitness programs
- ✗ Illegal operations and treatments
- ✗ Deodorant
- ✗ Funeral expenses
- ✗ Maternity clothes
- ✗ Hair transplants
- ✗ Teeth whitening

DUAL PURPOSE ITEMS

Items that can be used for a medical purpose or for general health and well-being are considered "dual purpose" and are eligible only with a prescription, doctor's directive or letter of medical necessity. Examples include:

- ✓ Dietary and weight loss supplements
- ✓ Snoring cessation aids
- ✓ Fiber supplements
- ✓ Vitamins and herbal supplements
- ✓ Orthopedic shoes and inserts



For more information visit connectyourcare.com

This material is for informational purposes only and is not an offer of coverage. ConnectYourCare does not provide tax or legal advice. This information is not intended and should not be taken as tax or legal advice. Any tax or legal information in this notice is merely a summary of ConnectYourCare's understanding and interpretation of some of the current tax regulations and is not exhaustive, nor is it a representation of actual savings to be had by your plan specifically. You should consult your tax advisor or legal counsel for advice and information concerning your particular situation before making any decisions.

© 2020 ConnectYourCare, LLC. All Rights Reserved.